



Learn about Seven & i Holdings

- Corporate Profile
- Seven & i Holdings in Numbers

Learn about the Market Environment

- Domestic Macroeconomic Environment
- Domestic Environment of the Retail Industry
- U.S. Macroeconomic Environment and Environment of the Retail Industry
- Major Operating Companies' Market Share (Nonconsolidated)

See Seven & i Holdings Performance

- Consolidated Financial Results
- Consolidated Financial Highlight
- Segment Information
- Financial Position

See Major Group Companies' Data

- Corporate Structure Specializing in Convenience Store Operations
- Domestic Convenience Store Operations
 - Seven-Eleven Japan
- Overseas Convenience Store Operations
 - 7-Eleven, Inc.
 - 7-Eleven International LLC
 - 7-Eleven Australia (Convenience Group Holdings Pty Ltd)
 - SEVEN-ELEVEN (BEIJING)
 - SEVEN-ELEVEN (TIANJIN)
 - SEVEN-ELEVEN (CHENGDU)

See Stock Information

- Stock Information

See Seven & i Holdings History

- Group History

Stock Information

Major Shareholders

(As of February 28, 2026)

	Number of shares (Thousand shares)	Percentage of shares held (%)
The Master Trust Bank of Japan, Ltd. (Trust account)	395,433	17.08
Ito-Kogyo Co., Ltd.	212,103	9.16
Custody Bank of Japan, Ltd. (Trust account)	142,434	6.15
Nippon Life Insurance Company	53,017	2.29
MITSUI & CO., LTD.	48,667	2.10
JP MORGAN CHASE BANK 385864	47,916	2.07
STATE STREET BANK AND TRUST COMPANY 505001	46,922	2.02
SMBC Nikko Securities Inc.	38,247	1.65
Mitsubishi UFJ Morgan Stanley Securities Co., Ltd.	33,864	1.46
THE CHASE MANHATTAN BANK, N.A. LONDONSECS LENDING OMNIBUS ACCOUNT	33,200	1.43

* The calculation of the percentage of shares held does not include shares of treasury stock. The shares of treasury stock do not include shares held by the "Board Incentive Plan (BIP) Trust" (the "BIP Trust") and the "ESOP Trust for Granting Stock" (the "ESOP Trust")

Classification of Shareholders

- Financial institutions
- Securities companies
- Other domestic corporations
- Foreign corporations
- Individuals and others (including treasury stock)

As of February 29, 2020



As of February 28, 2021



As of February 28, 2022



As of February 28, 2023



As of February 29, 2024



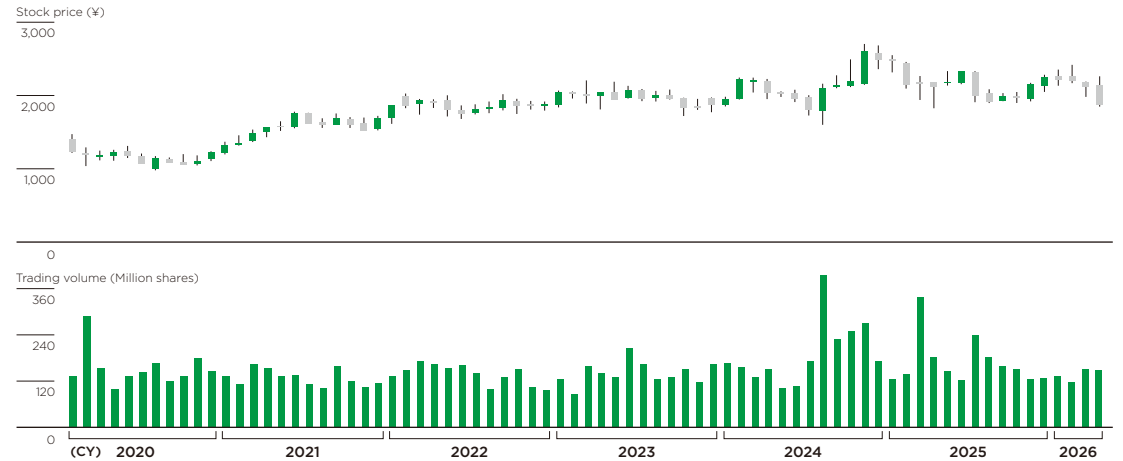
As of February 28, 2025



As of February 28, 2026



Stock Price Chart (Monthly)



	FY2020	FY2021	FY2022	FY2023	FY2024	FY2025	
Stock price (Yen)	Opening	1,208	1,383	1,885	2,017	2,180	2,177
	High	1,458	2,028	2,068	2,245	2,703	2,417
	Low	979	1,365	1,680	1,721	1,600	1,826
	Closing	1,346	1,864	2,030	2,230	2,144	2,196
Trading volume (Million shares)	1,807	1,578	1,584	1,689	2,240	2,023	

Investment Indices (Consolidated)

	FY2020	FY2021	FY2022	FY2023	FY2024	FY2025
Number of shares outstanding Average (Shares)*1	2,648,782,731	2,649,197,745	2,649,567,603	2,646,511,134	2,597,855,216	2,464,077,028
End of period (Shares)*1	2,648,898,837	2,649,348,894	2,649,674,136	2,622,913,557	2,594,832,371	2,311,679,726
Net income per share (Yen)	67.67	79.56	106.04	84.88	66.62	118.81
Cash flow per share (Yen)	156.59	190.00	247.99	236.32	234.68	273.84
Net assets per share (Yen)	1,007.56	1,125.16	1,311.31	1,416.94	1,555.39	1,566.06
Price earnings ratio (X)*2	19.9	23.4	19.1	26.3	32.2	18.5
Price cash flow ratio (X)*2	8.6	9.8	8.2	9.4	9.1	8.0
Price book value ratio (X)*2	1.3	1.7	1.5	1.6	1.4	1.4
Dividends per share (Yen)	32.83	33.33	37.66	37.66	40.00	60.00
Dividend payout ratio (%)	48.50	41.90	35.50	44.40	60.00	42.10
Ratio of total amounts of dividends to net assets (%)	3.3	3.1	3.1	2.8	2.7	3.8

*1 Figures exclude treasury stock.
*2 Calculated using the stock price at fiscal year-end.

(Note) The Company conducted a 3-for-1 common share split on March 1, 2024. Figures for FY2023 and before are calculated as if the share split had occurred at the beginning of FY2020.