

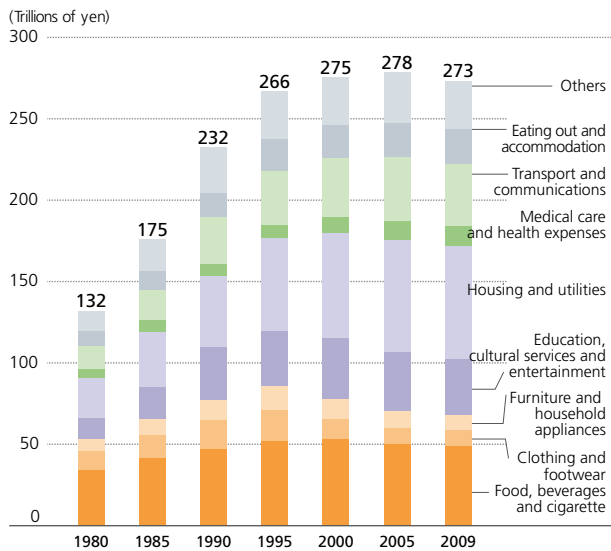
The Consumer Environment

YEAR-ON-YEAR COMPARISON OF ECONOMIC INDICES OVER FOUR QUARTERS



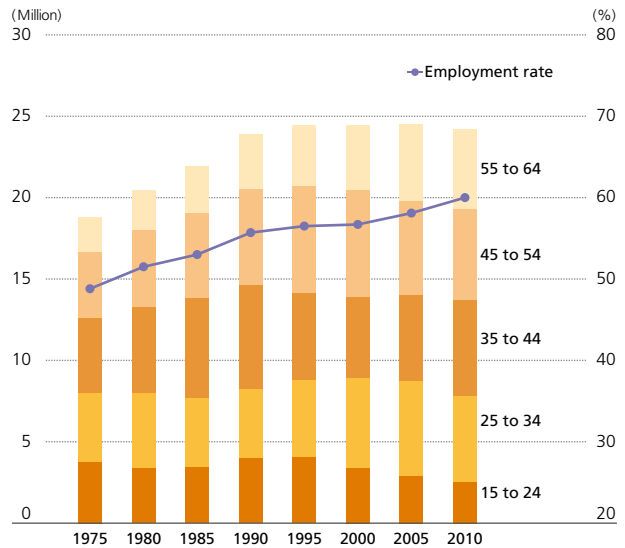
Source: National Accounts (Economic and Social Research Institute, Cabinet Office), Consumer Price Index (Ministry of Internal Affairs and Communications), Monthly Labour Survey (Ministry of Health, Labour and Welfare)

DOMESTIC FINAL CONSUMPTION EXPENDITURE OF HOUSEHOLD



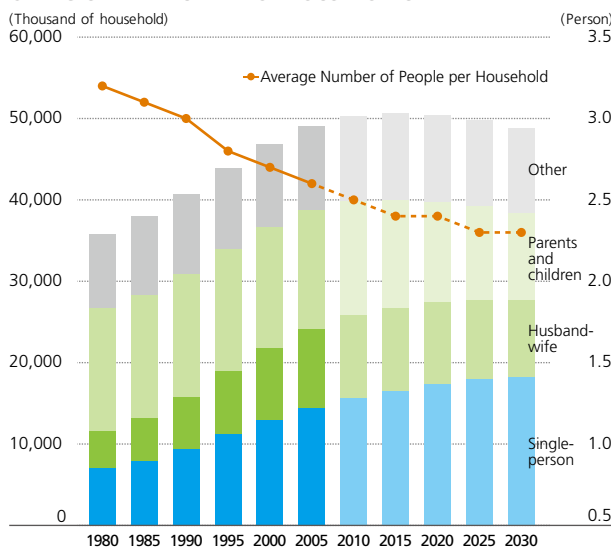
Source: National Accounts (Economic and Social Research Institute, Cabinet Office)

THE NUMBER OF FEMALE WORKERS AND THEIR EMPLOYMENT RATE



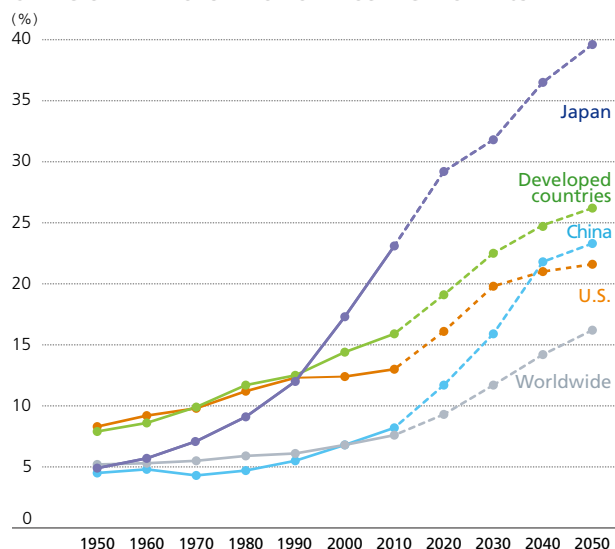
Source: Labour Force Survey (Ministry of Internal Affairs and Communications)

CHANGES IN THE NUMBER OF HOUSEHOLDS



Source: National Institute of Population and Social Security Research

CHANGES IN THE POPULATION OF THOSE AGED OVER 65

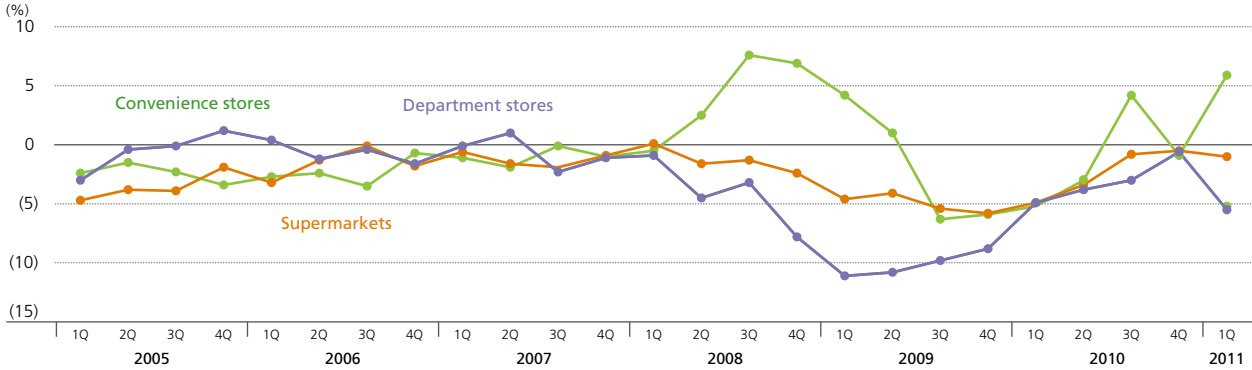


Source: Statistical Handbook of the World (Ministry of Internal Affairs and Communications)

Environment of Retail Industry

Profile

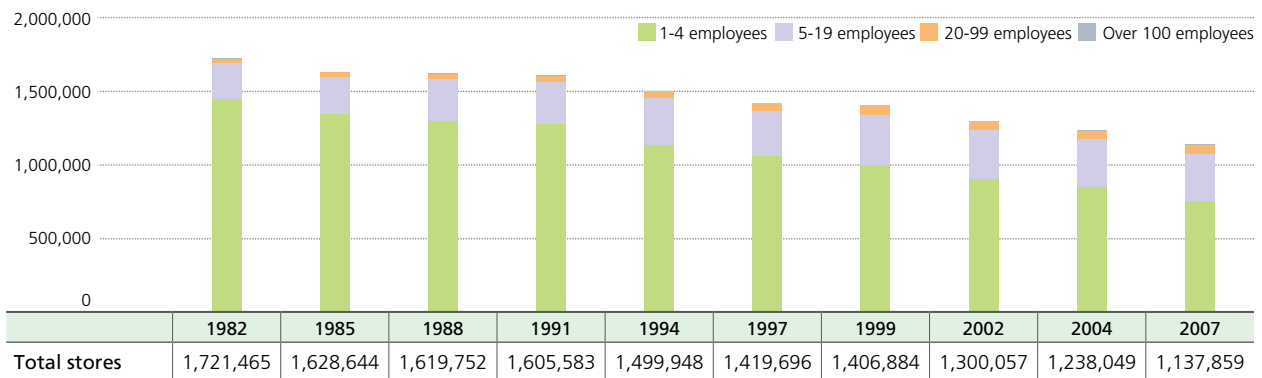
YEAR-ON-YEAR COMPARISON OF MAJOR STORE FORMATS OVER FOUR QUARTERS



Source: The Census of Commerce (Ministry of Economy, Trade and Industry)

Performance Overview

TREND IN NUMBER OF STORES BY STRATUM OF NUMBER OF EMPLOYEES

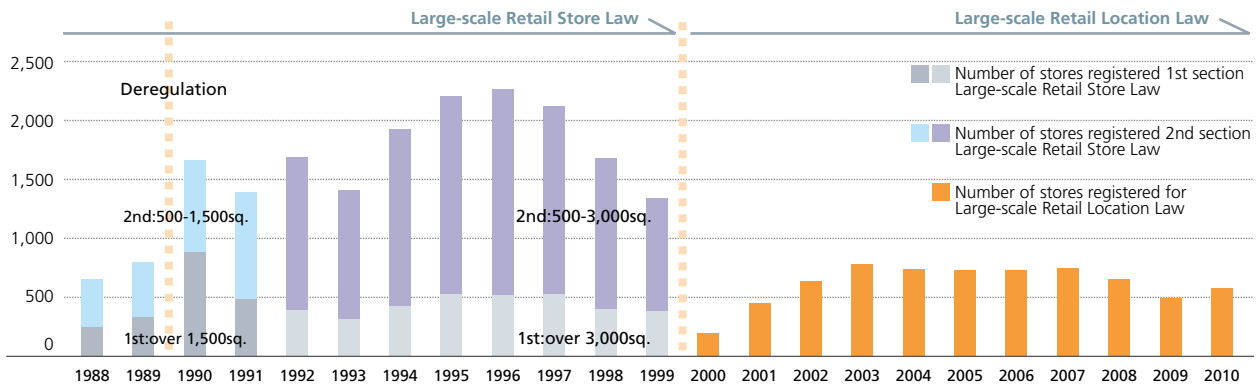


Source: The Census of Commerce (Ministry of Economy, Trade and Industry)

Retailers in the World

Domestic Market Share

TREND IN NUMBER OF REGISTERED LARGE-SCALE RETAIL STORES

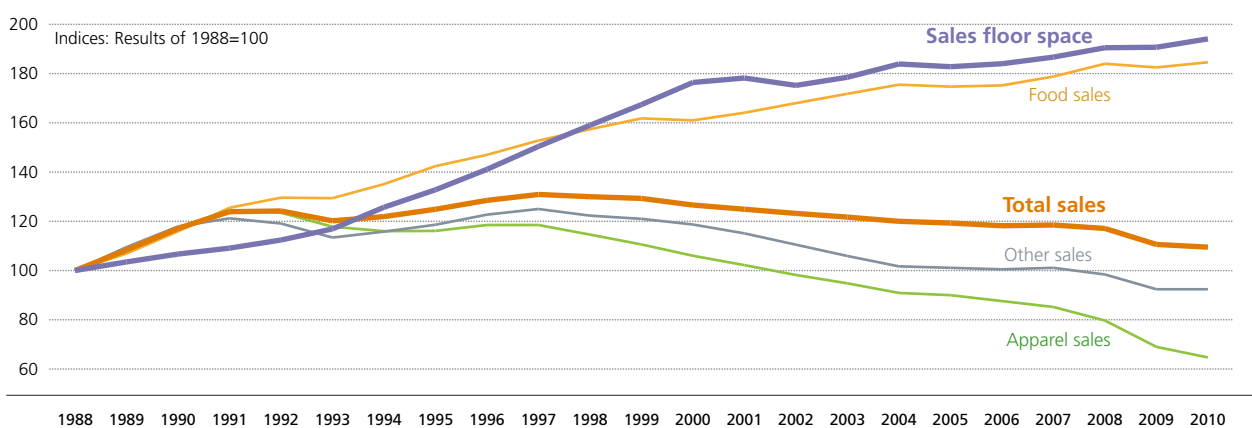


Source: Ministry of Economy, Trade and Industry

Domestic Retail Environment

Group Business Strategy

TREND IN SALES AND SALES FLOOR SPACE OF LARGE-SCALE RETAIL STORES



Source: Annual Report on the Current Survey of Commerce (Ministry of Economy, Trade and Industry)

Major Group Companies' Data

Corporate Data