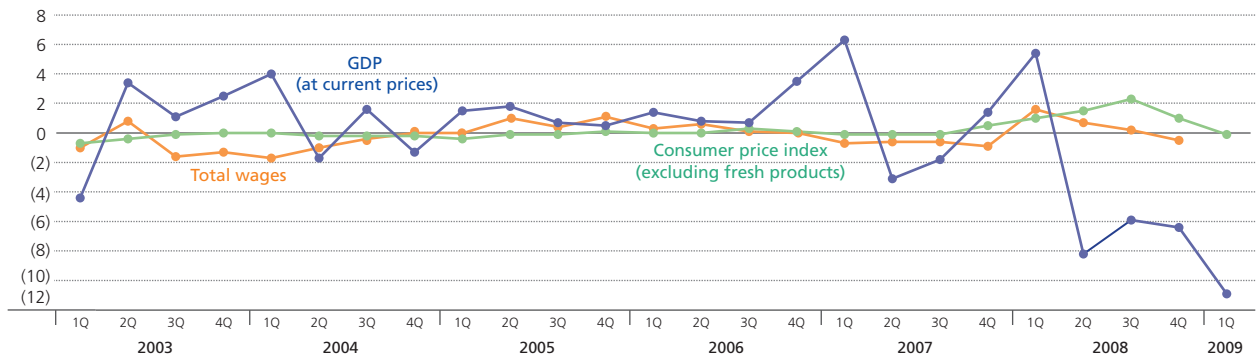


The Consumer Environment

YEAR-ON-YEAR COMPARISON OF ECONOMIC INDICES OVER FOUR QUARTERS

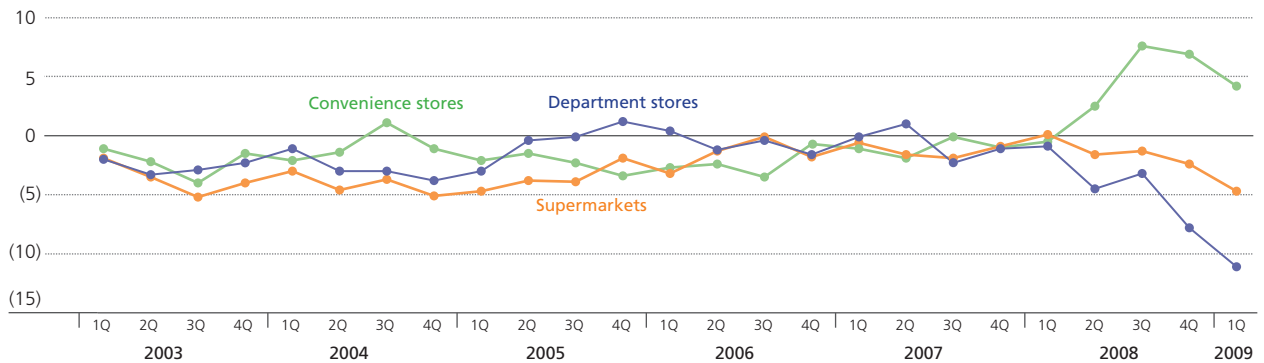
(%)



Source: National Accounts (Economic and Social Research Institute, Cabinet Office), Consumer Price Index (Ministry of Internal Affairs and Communications), Monthly Labour Survey (Ministry of Health, Labour and Welfare)

YEAR-ON-YEAR COMPARISON OF MAJOR STORE FORMATS OVER FOUR QUARTERS

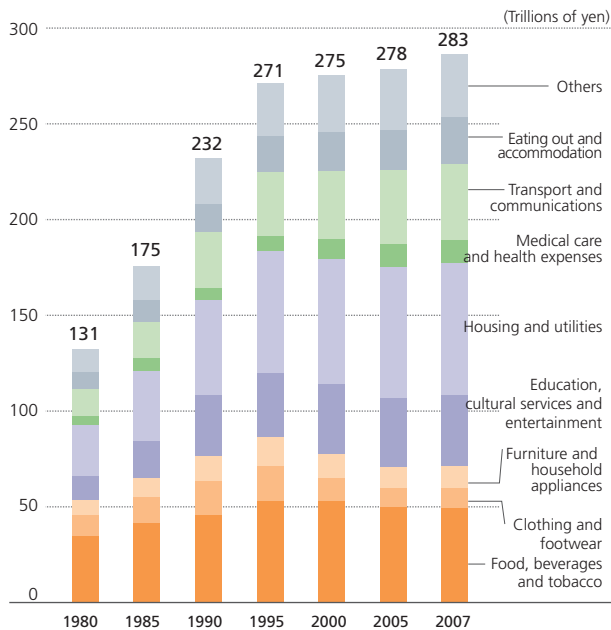
(%)



Source: The Census of Commerce (Ministry of Economy, Trade and Industry)

DOMESTIC FINAL CONSUMPTION EXPENDITURE OF HOUSEHOLD

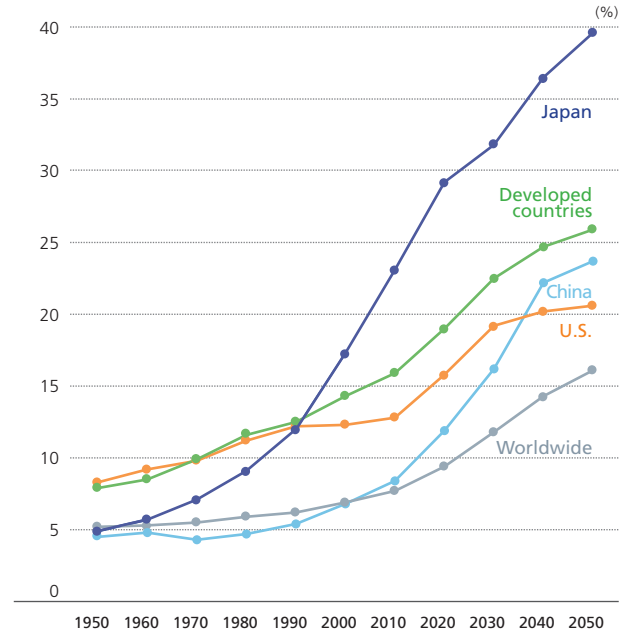
(Trillions of yen)



Source: National Accounts (Economic and Social Research Institute, Cabinet Office)

CHANGES IN THE POPULATION OF THOSE AGED OVER 65

(%)

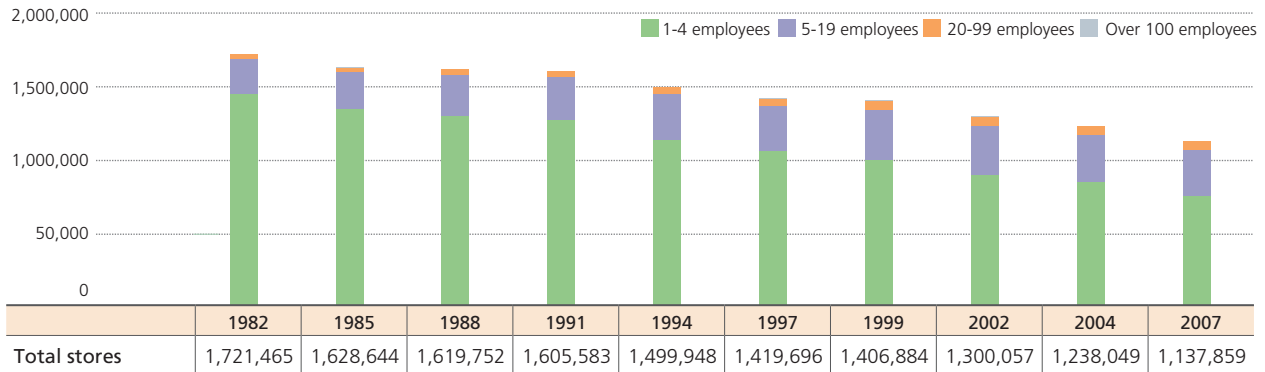


Source: Statistical Handbook of the World (Ministry of Internal Affairs and Communications)

Environment of Retail Industry

Profile

TREND IN NUMBER OF STORES BY STRATUM OF NUMBER OF EMPLOYEES

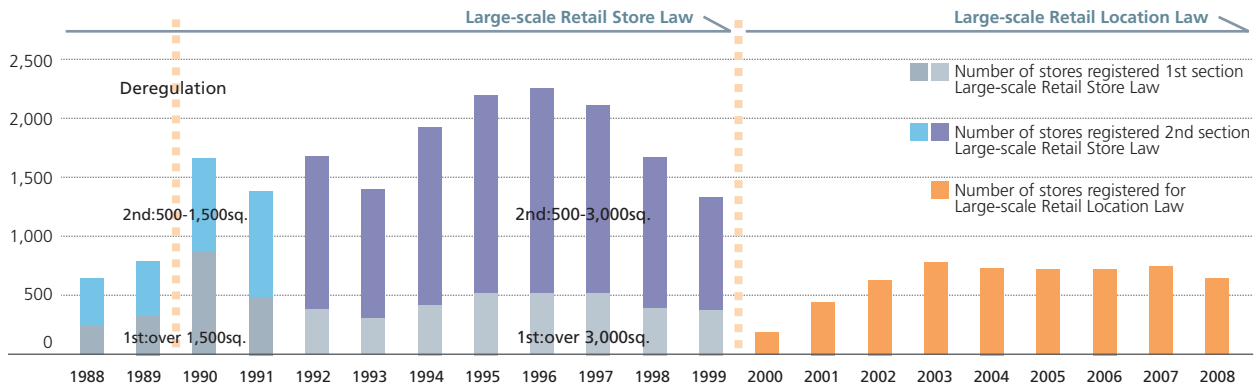


Source: The Census of Commerce (Ministry of Economy, Trade and Industry)

Performance Overview

Retailers in the World

TREND IN NUMBER OF REGISTERED LARGE-SCALE RETAIL STORES

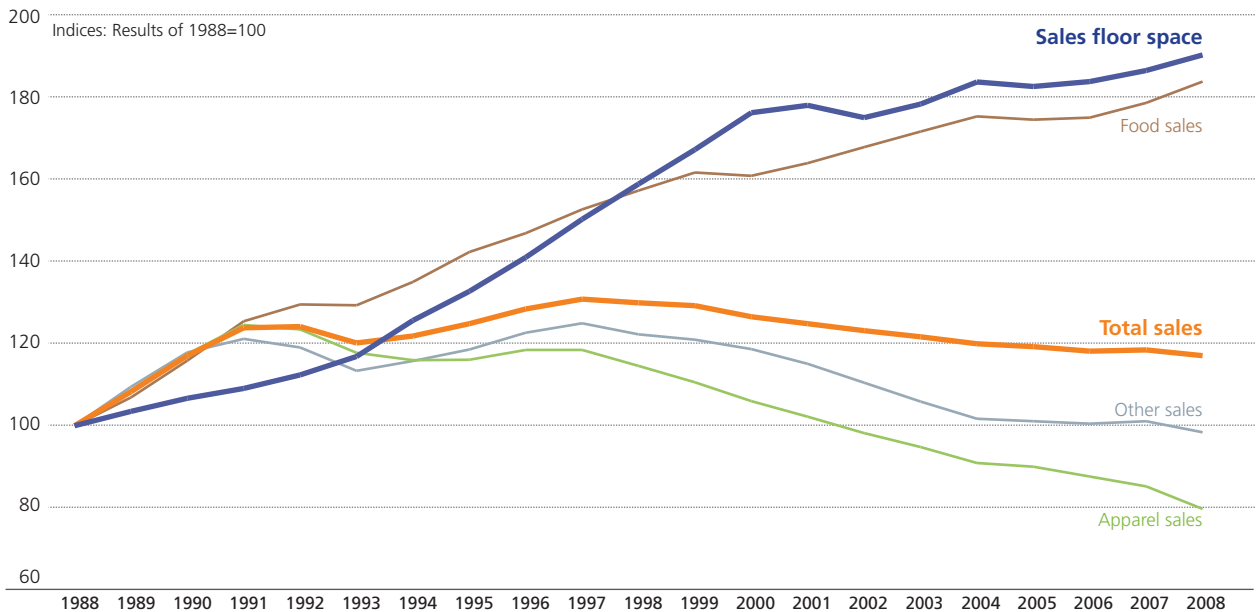


Source: Ministry of Economy, Trade and Industry

Domestic Retail Environment

Group Business Strategy

TREND IN SALES AND SALES FLOOR SPACE OF LARGE-SCALE RETAIL STORES



Source: Annual Report on the Current Survey of Commerce (Ministry of Economy, Trade and Industry)

Major Group Companies' Data

Financial Data of Major Retailers in Japan

Corporate Data