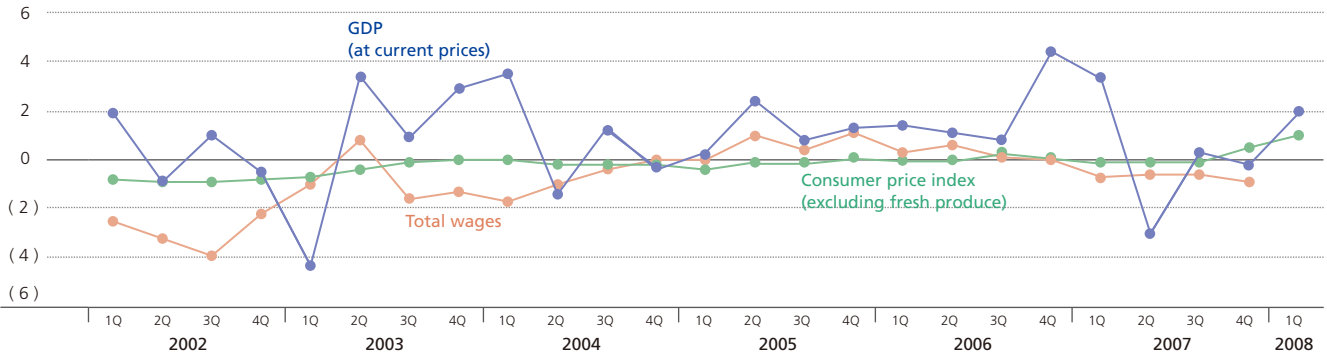


# The Consumer Environment

## YEAR-ON-YEAR COMPARISON OF ECONOMIC INDICES OVER FOUR QUARTERS

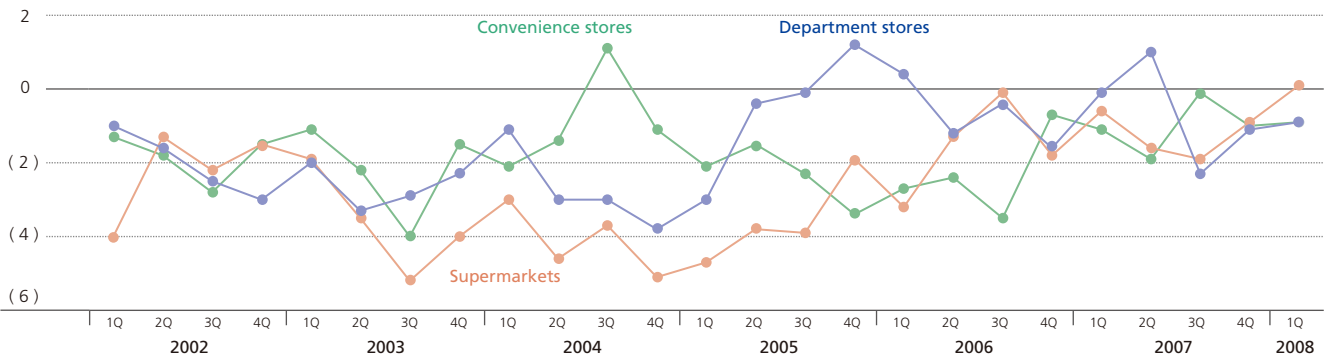
(%)



Source: National Accounts (Economic and Social Research Institute, Cabinet Office), Consumer Price Index (Ministry of Internal Affairs and Communications), Monthly Labour Survey (Ministry of Health, Labour and Welfare)

## YEAR-ON-YEAR COMPARISON OF MAJOR STORE FORMATS OVER FOUR QUARTERS

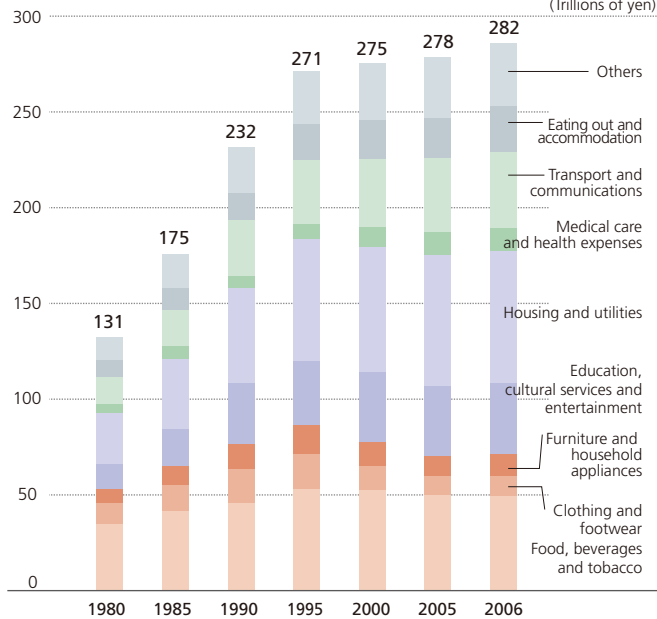
(%)



Source: The Census of Commerce (Ministry of Economy, Trade and Industry)

## DOMESTIC FINAL CONSUMPTION EXPENDITURE OF HOUSEHOLD

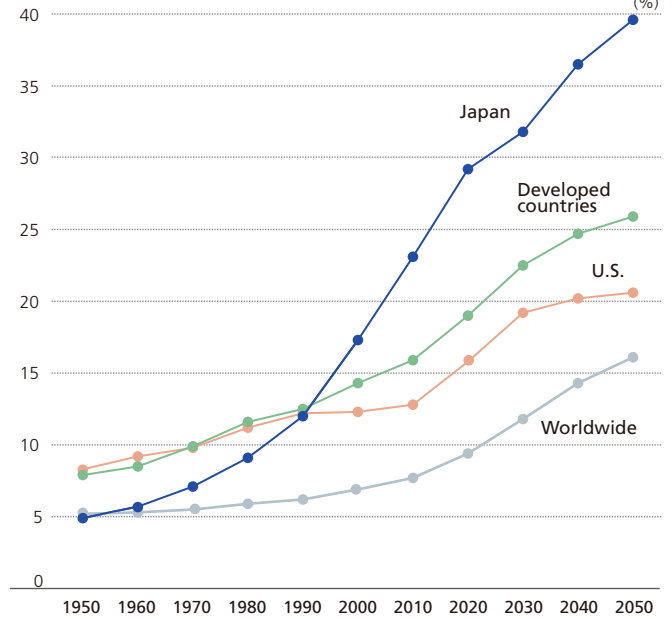
(Trillions of yen)



Source: National Accounts (Economic and Social Research Institute, Cabinet Office)

## CHANGES IN THE POPULATION OF THOSE AGED OVER 65

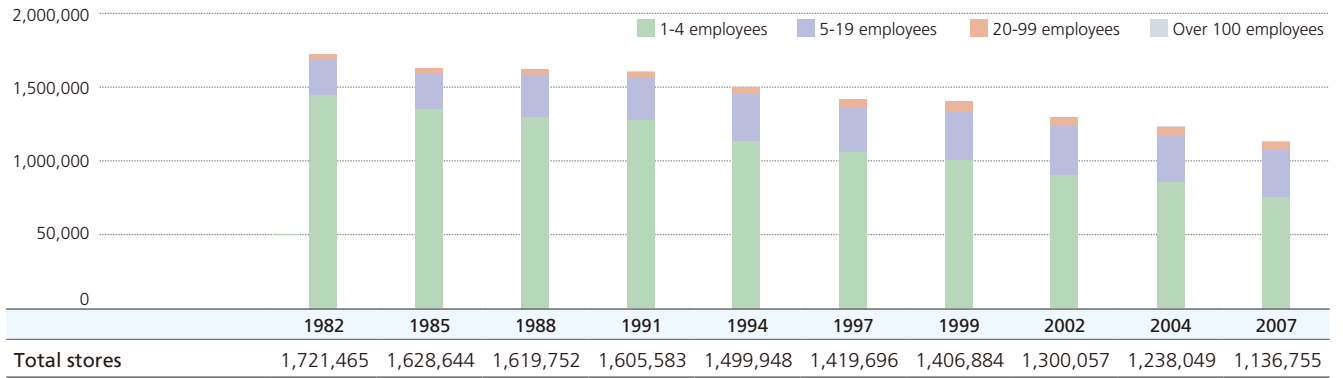
(%)



Source: Statistical Handbook of the World (Ministry of Internal Affairs and Communications)

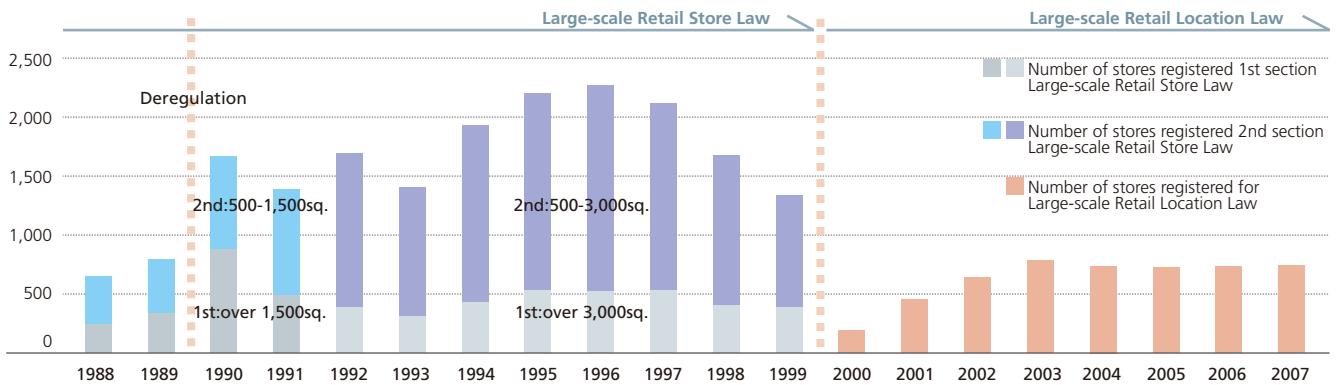
# Environment of Retail Industry

## TREND IN NUMBER OF STORES BY STRATUM OF NUMBER OF EMPLOYEES



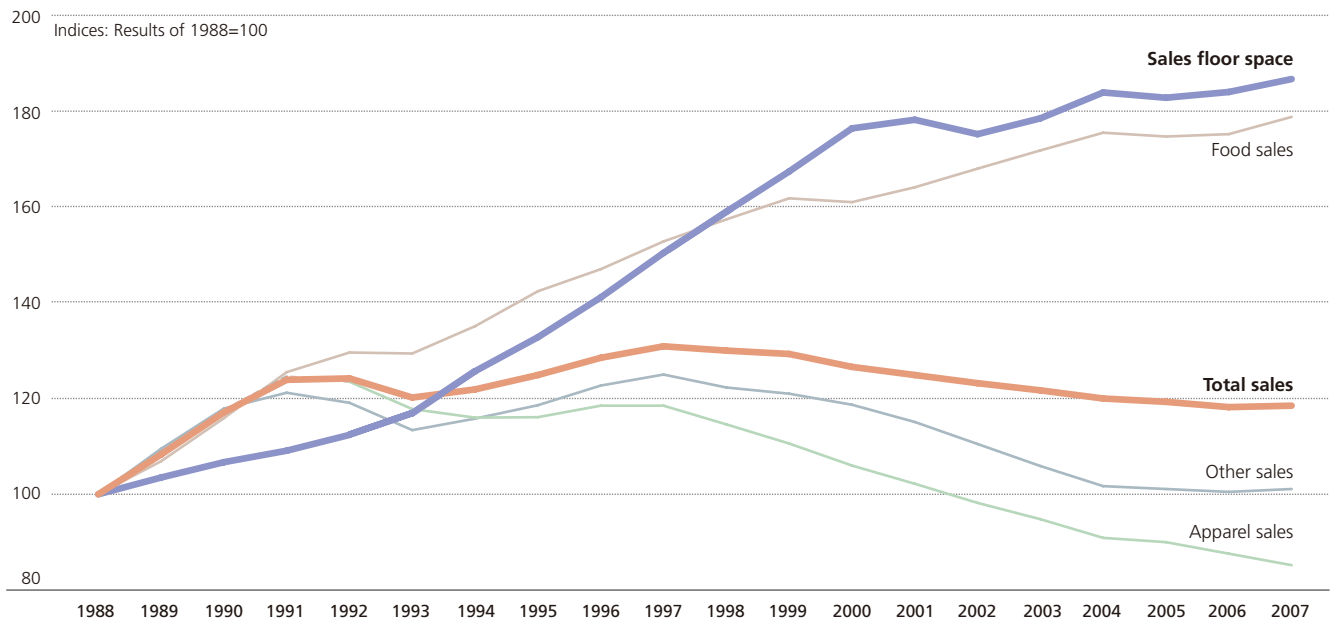
Source: The Census of Commerce (Ministry of Economy, Trade and Industry)

## TREND IN NUMBER OF REGISTERED LARGE-SCALE RETAIL STORES



Source: Ministry of Economy, Trade and Industry

## TREND IN SALES AND SALES FLOOR SPACE OF LARGE-SCALE RETAIL STORES



Source: Annual Report on the Current Survey of Commerce (Ministry of Economy, Trade and Industry)