



Learn about Seven & i Group

- Company Profile
- Seven & i Group in Numbers

Learn about the Market Environment

- Domestic Macroeconomic Environment
- Domestic Environment of the Retail Industry
- U.S. Macroeconomic Environment and Environment of the Retail Industry
- Major Operating Companies' Market Share in Japan(Nonconsolidated)
- Global Retail Industry - Sales Ranking
- Market Capitalization Ranking

Understand Seven & i Group's Strategy and Performance

- Key Group Strategies - Strengths of "Food" -
- Consolidated Financial KPI
- Capital Re-allocation Plan / Shareholder Return
- Consolidated Financial Results
- Consolidated Financial Highlight
- Segment Information
- Financial Position
- Overview of Major Operating Companies
- Domestic Convenience Store Operations
- Overseas Convenience Store Operations
- Superstore Operations
- Department and Specialty Store Operations
- Financial Services

See Stock Information

▶ Stock Information

See Seven & i Group's History

Group History

Stock Information

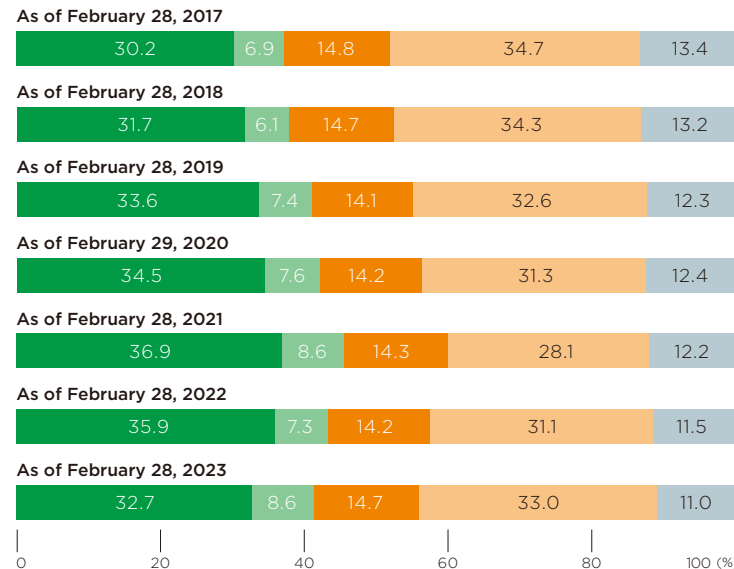
Major Shareholders

(As of February 28, 2023)

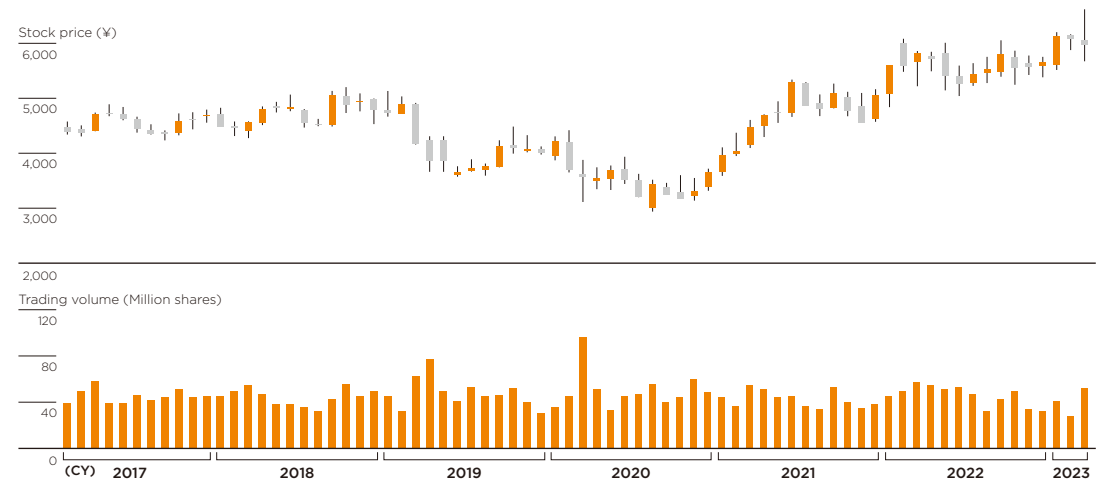
	Number of shares held (Thousand shares)	Percentage of shares held (%)
THE MASTER TRUST BANK OF JAPAN, LTD. (TRUST ACCOUNT)	121,723	13.7
ITO-KOGYO CO., LTD.	70,701	8.0
CUSTODY BANK OF JAPAN, LTD. (TRUST ACCOUNT)	52,596	5.9
SMBC NIKKO SECURITIES INC.	34,588	3.9
SSBTC CLIENT OMNIBUS ACCOUNT	21,197	2.4
MASATOSHI ITO	19,658	2.2
NIPPON LIFE INSURANCE COMPANY	17,672	2.0
VALUEACT CAPITAL MASTER FUND L.P.	16,761	1.9
MITSUI & CO., LTD.	16,222	1.8
JAPAN SECURITIES FINANCE CO., LTD.	14,153	1.6

Classification of Shareholders

■ Financial institutions
 ■ Securities companies
 ■ Other domestic corporations
 ■ Foreign corporations
 ■ Individuals and others (including treasury stock)



Stock Price Chart (Monthly)



	FY2017	FY2018	FY2019	FY2020	FY2021	FY2022
Stock price (¥)						
Opening	4,430	4,409	4,893	3,623	4,150	5,656
High	4,891	5,203	4,916	4,373	6,083	6,203
Low	4,234	4,275	3,573	2,938	4,095	5,041
Closing	4,461	4,894	3,696	4,037	5,591	6,090
Trading volume (Million shares)	552	514	577	602	526	528

Investment Indices (Consolidated)

	FY2017	FY2018	FY2019	FY2020	FY2021	FY2022
Number of shares outstanding	884,531,496	884,568,131	883,508,868	882,927,577	883,065,915	883,189,201
Average (Shares) ¹⁾	884,544,201	884,568,599	882,845,467	882,966,279	883,116,298	883,224,712
End of period (Shares) ¹⁾						
Net income per share (¥)	204.80	229.50	246.95	203.03	238.68	318.14
Cash flow per share (¥)	445.79	479.49	503.29	469.76	569.99	743.98
Net assets per share (¥)	2,744.08	2,850.42	2,946.83	3,022.68	3,375.50	3,933.93
Price earnings ratio (X) ²⁾	21.8	21.3	15.0	19.9	23.4	19.1
Price cash flow ratio (X) ²⁾	10.0	10.2	7.3	8.6	9.8	8.2
Price book value ratio (X) ²⁾	1.6	1.7	1.3	1.3	1.7	1.5
Dividends per share (¥)	90.00	95.00	98.50	98.50	100.00	113.0
Dividend payout ratio (%)	43.9	41.4	39.9	48.5	41.9	35.5
Ratio of total amounts of dividends to net assets (%)	3.3	3.4	3.4	3.3	3.1	3.1

¹⁾ Figures exclude treasury stock. A Board Incentive Plan for compensation of Directors and Audit & Supervisory Board Members and an Employee Stock Ownership Plan were introduced from FY2019, and the Company's shares held by these plans include treasury stock.

²⁾ Calculated using the stock price at fiscal year-end.