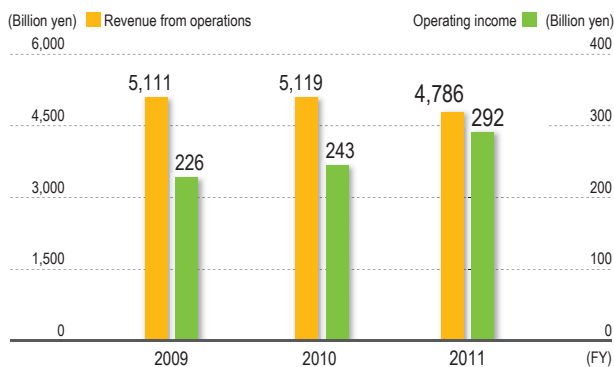




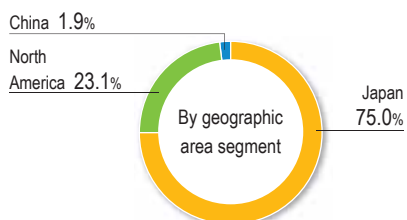
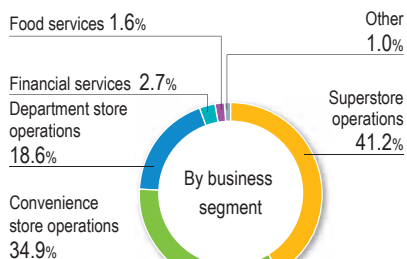
### Corporate Data (as of February 29, 2012)

Company name	Seven & i Holdings Co., Ltd.
Headquarters	8-8 Nibancho, Chiyoda-ku, Tokyo 102-8452, Japan
Established	September 1, 2005
Businesses	Planning, management, and operations for the various Group companies, centered on convenience stores, general merchandise stores, department stores, supermarkets, food services, financial services, and IT/services
Paid-in capital	¥50 billion
Employees	134,689*
(consolidated)	*Including part-time employees (monthly average number, with 8 hours/day counted as one employee)
Website	<a href="http://www.7andi.com/en/">http://www.7andi.com/en/</a>

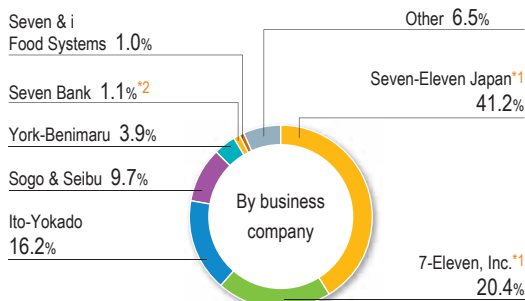
### Revenue from operations and operating income



### Revenue from operations (FY2011)

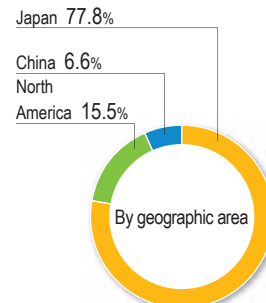


### Net sales (FY2011)



<sup>\*1</sup> The sales represent total store sales.  
<sup>\*2</sup> The sales represent ordinary income.

### Consolidated employees



Corporate information and financial details are available on the website. <http://www.7andi.com/en/ir/index.html>

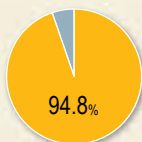
## About the CSR Report

The CSR Report 2012 mainly covers measures being implemented by Seven & i Holdings, the holding company, as well as major initiatives by operating companies. It was compiled in line with the Challenges Facing the Seven & i Group (see page 5).

- Report coverage

The Report mainly covers the following organizations. Information on each company is also available on the following websites.

Sales of reporting organizations as a percentage of overall sales



Seven & i Holdings Co., Ltd.  
<http://www.7andi.com/en/csr/index.html>

Seven-Eleven Japan Co., Ltd. (in Japanese)  
<http://c.sej.co.jp/corp/social/>

Ito-Yokado Co., Ltd. (in Japanese)  
<http://www.itoyokado.co.jp/company/iycsr/>

York-Benimaru Co., Ltd. (in Japanese)  
<http://www.yorkbeni.co.jp/enviro/index.html>

Sogo & Seibu Co., Ltd. (in Japanese)  
<http://www.sogo-seibu.co.jp/csr.html>

Seven & i Food Systems Co., Ltd. (in Japanese)  
<http://www.7andi-fs.co.jp/7fs/company/csr.html>

Seven Bank, Ltd. (in Japanese)  
<http://www.sevenbank.co.jp/corp/csr/>

7-Eleven, Inc.  
<http://corp.7-eleven.com/>

SEVEN-ELEVEN (HAWAII), INC.  
<http://www.7elevenhawaii.com/home>

SEVEN-ELEVEN (BEIJING) CO., LTD. (in Chinese)  
<http://www.7-11bj.com.cn/>

Hua Tang Yokado Commercial Co., Ltd. (in Chinese)  
<http://www.ht-store.com/d/index.do>

Chengdu Ito-Yokado Co., Ltd. (in Chinese)  
<http://www.iy-cd.com/>

Beijing Wang fu jing Yokado Commercial Co., Ltd. (in Chinese)  
<http://www.wfj-yokado.com/>

- Period of the Report

In principle, this Report covers our activities during FY2011 (March 2011 to February 2012). Some of our activities in FY2012 are also included.

- References

- Environmental Reporting Guidelines – Towards a Sustainable Society – (FY2007 Version), Ministry of the Environment, Government of Japan
- Sustainability Reporting Guidelines (Version 3.1), Global Reporting Initiative (GRI)
- ISO26000

- Current Report    September 2012

- Scheduled publication of next Report                      September 2013

## Contents

Messages from CEO and COO .....	4
Our View on Responsibilities to Stakeholders .....	6
Progress in Measures Regarding Challenges Facing the Seven & i Group .....	8
Strengthening Corporate Governance and CSR Management .....	10

## Special Feature

Contributing to Resolution of Diverse Challenges as Social Infrastructure .....	16
---	----

## Report on Major Activities Conducted in the Year

 Reducing the Environmental Impact .....	20
 Providing Safe, Reliable Products and Services .....	28
 Creating Fulfilling Workplaces .....	32
 Coexisting with Local Communities .....	35
Overseas Initiatives .....	37
Data on the Six Domestic Operating Companies .....	46
Greenhouse Gas Emission Verification Statement .....	64
Awards and Evaluations by Outside Parties .....	65
Results of Questionnaire to the Readers of the CSR Report 2011 .....	66

### Disclaimer

The data shown in this report are based on information as of the time of writing. Actual activities and results may differ depending on future social changes.